



# **HIAB** eX.262 HI PRO

BASIC DATA  
2024.12

# HIAB eX.262 HIPRO

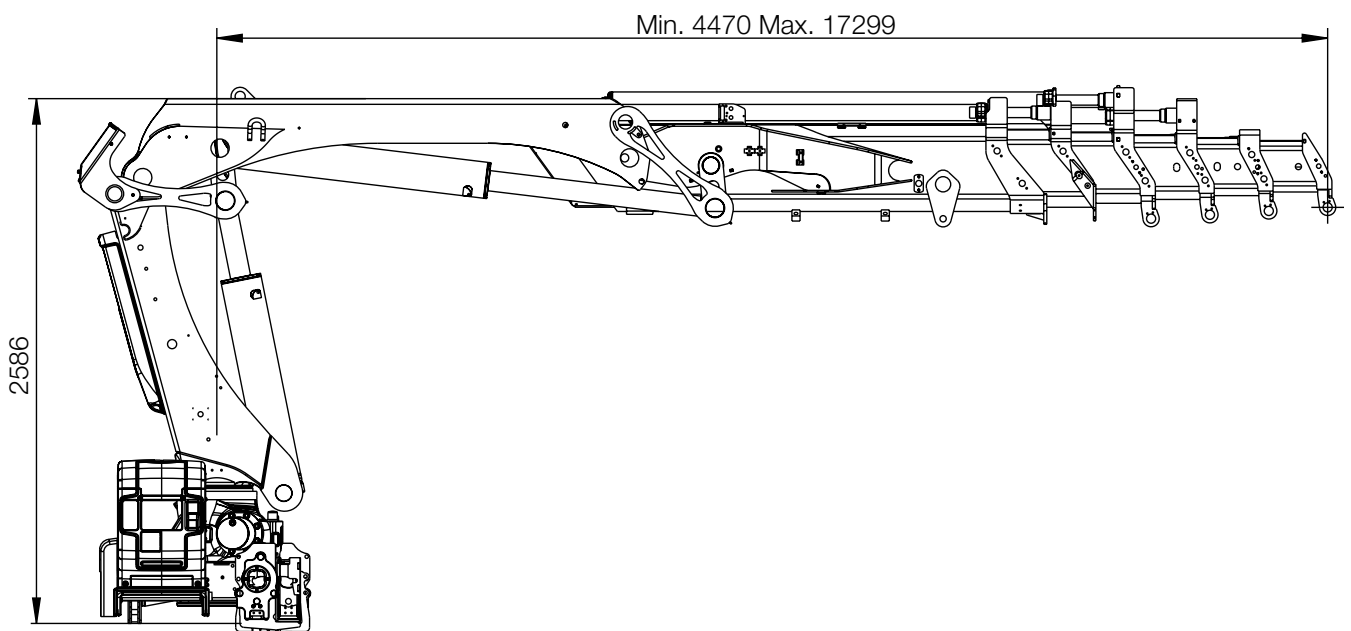
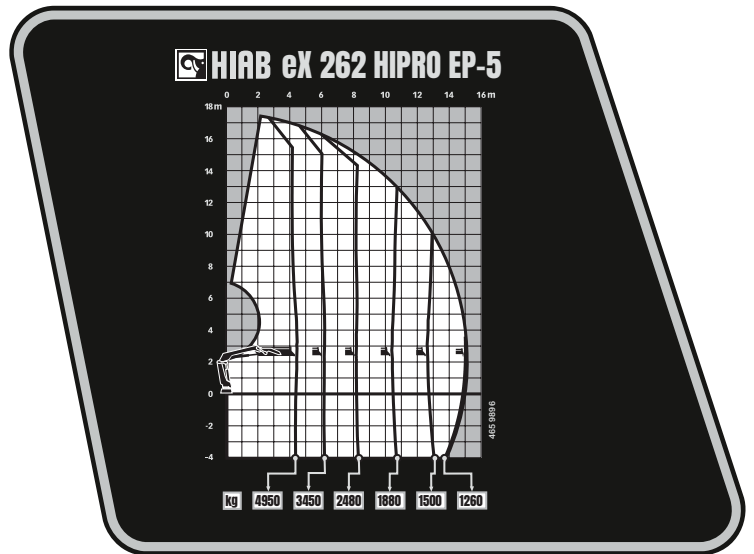
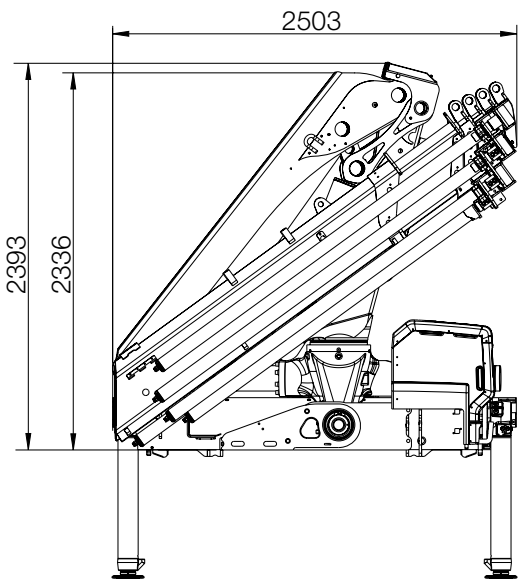
## BASIC DATA

Technical data	eX.262 HIPRO E-6	eX.262 HIPRO E-6 Jib 45X-3	eX.262 HIPRO E-8	eX.262 HIPRO EP-5
Mdyn (kNm)	284	285		284
Lifting capacity (kNm)	210		200	218
Lifting capacity (tm)	21.4		20.4	22.3
Outreach – lifting capacity, standard (m - kg)	2.5 – 8 400	19.1 – 320	4.7 – 4350	–
	4.5 – 4750	20.7 – 280	6.3 – 2960	4.5 – 4950
	6.1 – 3300	22.6 – 240	8.1 – 2060	6.2 – 3450
	7.9 – 2360	24.5 – 220	10 – 1500	8.2 – 2480
	9.8 – 1800	–	12 – 1120	10.4 – 1880
	11.8 – 1400	–	14.1 – 880	12.7 – 1500
	13.9 – 1160	–	16.3 – 700	15 – 1260
	16.1 – 980	–	18.6 – 580	–
Outreach – lifting capacity, manual extensions (m – kg)	18.3 – 780	–	22.4 – 440	17.2 – 1040
	20.4 – 640	–	–	–
Hydraulic outreach, standard (m)	16.2	24.7	21	15.1
Hydraulic boom extension (m)	11.7	17.13	16.3	10.6
Outreach, manual extensions (m)	18.4	–	22.6	17.3
Lifting height above installation level, hydr/man (m)	18.8 / 23.1	27.3 / 0.0	23.6 / 25.1	17.7 / 19.9
Rec. fixed oil flow (l/min)	70 – 90			
Rec. variable oil flow (l/min)	90 – 120			
Working pressure (Mpa)	32.9			
Oil in tank (l)	150 – 200			
Tank capacity (l)	0 – 235			
Slewing angle (°)	410			
Max slope viable at full capacity (°)	5			
Slewing torque, gross (kNm)	28.3			
Slewing speed (°/s)	15			
Lifting speed at standard hydraulic outreach (m/s)	2.3	2.7	3	2.2
Height in folded position (mm)	2401	2633	2401	2393
Width in folded position (mm)	2505		2508	2503
Install space required with hose and pipe kit (mm)	1166	1215	1200	1153
Crane in standard version without stabiliser system (kg)	3210	3920	3540	3000
Frame attachments (kg)	56 – 63			
Stabiliser system equipment (kg)	381 – 465			

*This table shows a few examples of models, and represents some of all options available. With the opportunity to configure your crane, we can provide you with a crane perfectly tailored to your needs.*

*Please contact your local dealer for more information on the variety of options we can offer.*

# HIAB eX.262 HIPRO\*



**Disclaimer.** We reserve the right to make changes. Illustrations, drawings and data are not always in accordance with the latest version or standard model in production. The models in the pictures may present special equipment or colours.

# BUILT TO PERFORM

Hiab is a leading provider of smart and sustainable load handling solutions. We are committed to delivering the best customer experience every day with the most engaged people and partners. Hiab's premium equipment includes HIAB, EFFER and ARGOS loader cranes, MOFFETT and PRINCETON truck mounted forklifts, LOGLIFT forestry cranes, JONSERED recycling cranes, MULTILIFT skiploaders and hooklifts, GALFAB roll-off cable hoists, and tail lifts under the ZEPRO, DEL and WALTCO brands. As the industry pioneer, Hiab continues to make load handling smarter, safer and more sustainable to build a better tomorrow. Hiab is part of Cargotec Corporation.

[www.hiab.com](http://www.hiab.com)

