



# **HIAB** 178 CLX

BASIC DATA  
2025.01

# HIAB 178 CLX

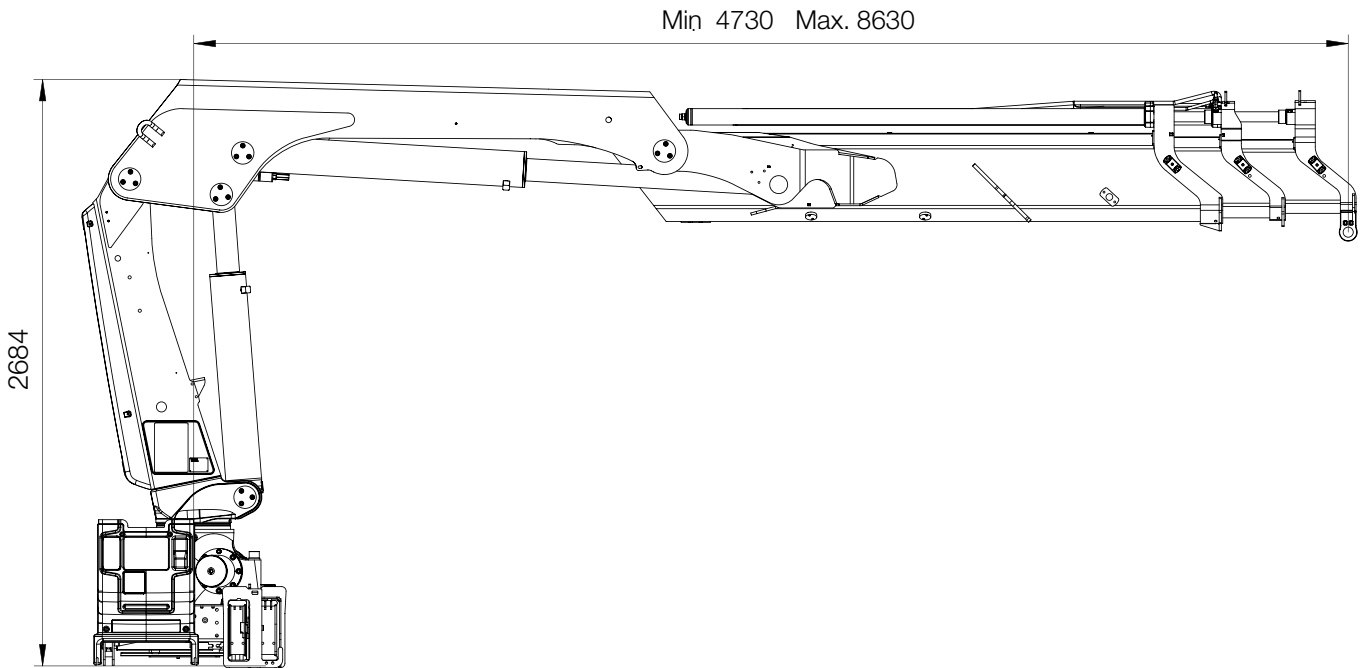
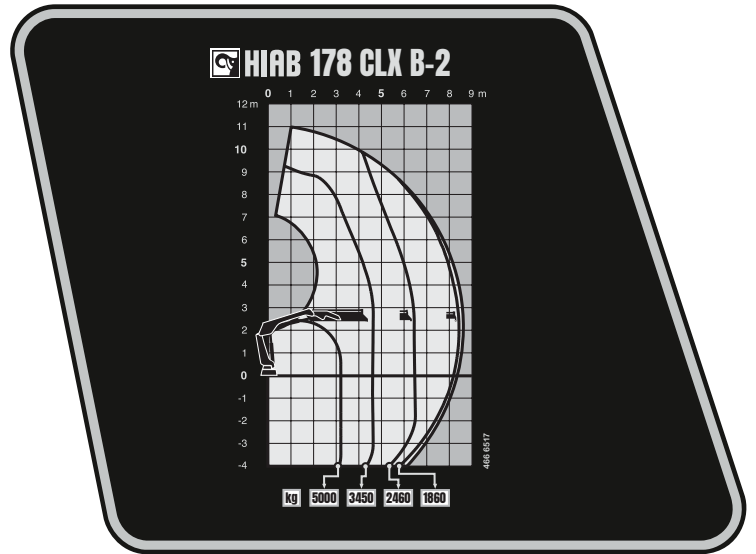
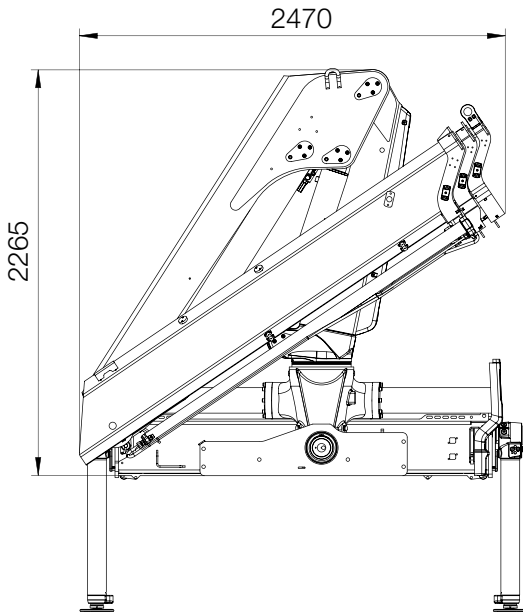
## BASIC DATA

Technical data	178 CLX B-1	178 CLX B-2	178 CLX B-3	178 CLX E-3
Mdyn (kNm)	204	209	212	216
Lifting capacity (ADC) (kNm)	163	157	152	154
Lifting capacity (ADC) (tm)	16.7	16	15.5	15.7
Outreach – lifting capacity, standard (m - kg)	3.2 – 5100	3.2 – 5000	3.4 – 4550	3.2 – 4900
	4.5 – 3700	4.6 – 3450	4.6 – 3350	4.8 – 3250
	6.3 – 2650	6.4 – 2460	6.4 – 2320	6.6 – 2280
	–	8.4 – 1860	8.4 – 1720	8.6 – 1700
	–	–	10.5 – 1360	10.6 – 1360
Outreach / lifting capacity, manual extension (m-kg)	8.4 – 1900	10.4 – 1420	12.6 – 1060	12.8 – 1060
Hydraulic outreach, standard (m)	6.5	8.6	10.8	
Hydraulic boom extension (m)	1.9	3.9	6	
Outreach, manual extensions (m)	8.4	10.4	12.6	12.9
Lifting height above installation level, hydr/man (m)	9.0 / 11.1	11.1 / 13.2	13.2 / 15.4	
Rec. fixed oil flow (l/min)	45 – 60			
Working pressure (Mpa)	30.8			31.3
Oil in tank (l)	64 – 200			
Tank capacity (l)	85 – 235			
Slewing angle (°)	415			
Max slope viable at full capacity (°)	5			
Slewing torque, gross (kNm)	28.3			
Slewing speed (°/s)	15			
Lifting speed at standard hydraulic outreach (m/s)	0.9	1.3	1.6	
Height in folded position (mm)	2265			2260
Width in folded position (mm)	2485		2492	2485
Install space required with hose and pipe kit (mm)	855	965	950	970
Crane in standard version without stabiliser system (kg)	1610	1760	1930	2050
Frame attachments (kg)	41 – 65			
Stabiliser system equipment (kg)	271 – 428			

*This table shows a few examples of models, and represents some of all options available. With the opportunity to configure your crane, we can provide you with a crane perfectly tailored to your needs.*

*Please contact your local dealer for more information on the variety of options we can offer.*

# HIAB 178 CLX\*



**Disclaimer.** We reserve the right to make changes. Illustrations, drawings and data are not always in accordance with the latest version or standard model in production. The models in the pictures may present special equipment or colours.

# BUILT TO PERFORM

Hiab is a leading provider of smart and sustainable load handling solutions. We are committed to delivering the best customer experience every day with the most engaged people and partners. Hiab's premium equipment includes HIAB, EFFER and ARGOS loader cranes, MOFFETT and PRINCETON truck mounted forklifts, LOGLIFT forestry cranes, JONSERED recycling cranes, MULTILIFT skiploaders and hooklifts, GALFAB roll-off cable hoists, and tail lifts under the ZEPRO, DEL and WALTCO brands. As the industry pioneer, Hiab continues to make load handling smarter, safer and more sustainable to build a better tomorrow. Hiab is part of Cargotec Corporation.

[www.hiab.com](http://www.hiab.com)

