



# **HIAB** 218 CLX

BASIC DATA  
2025.01

# HIAB 218 CLX

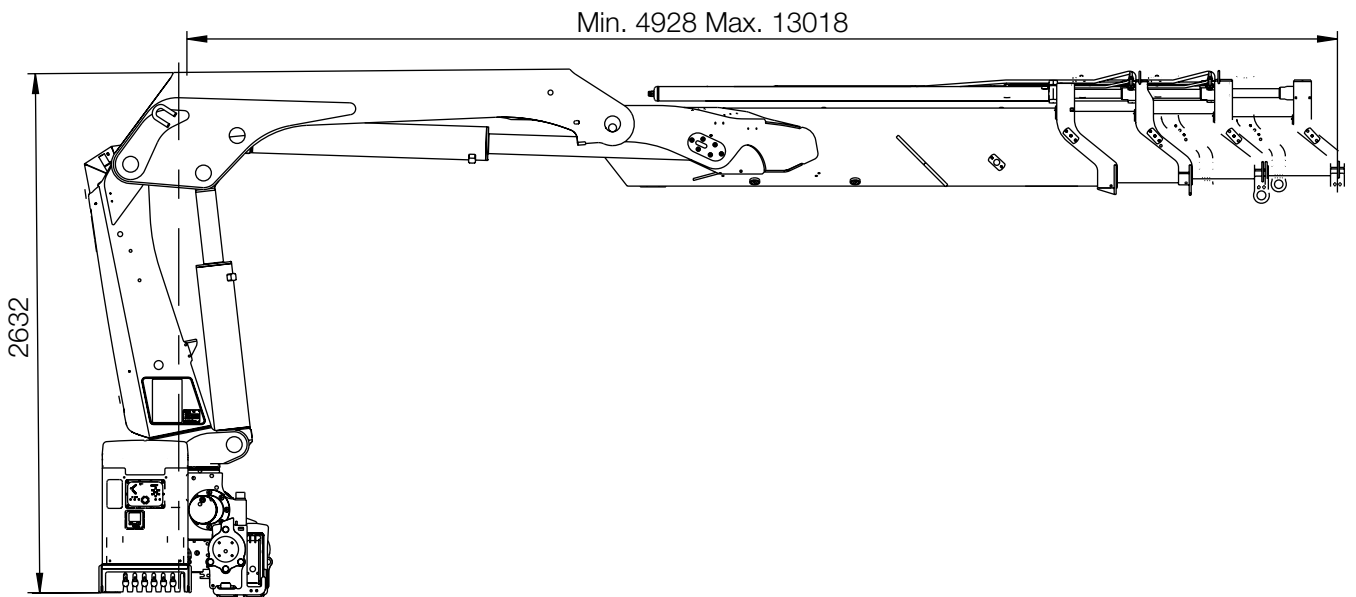
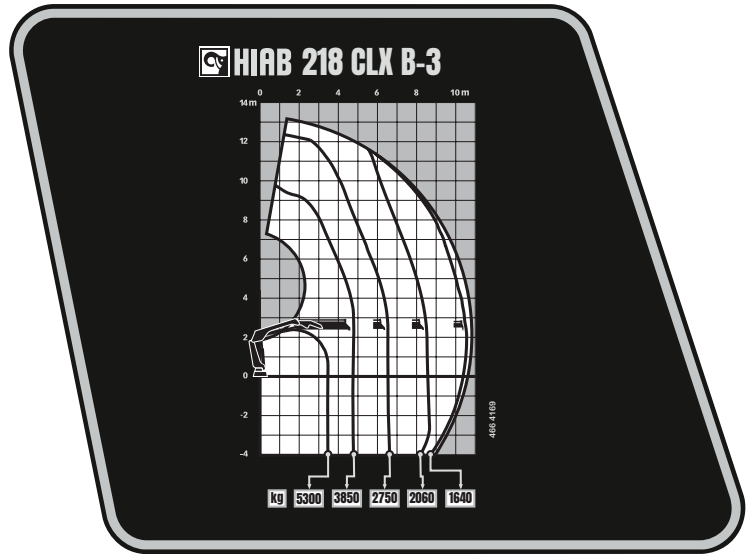
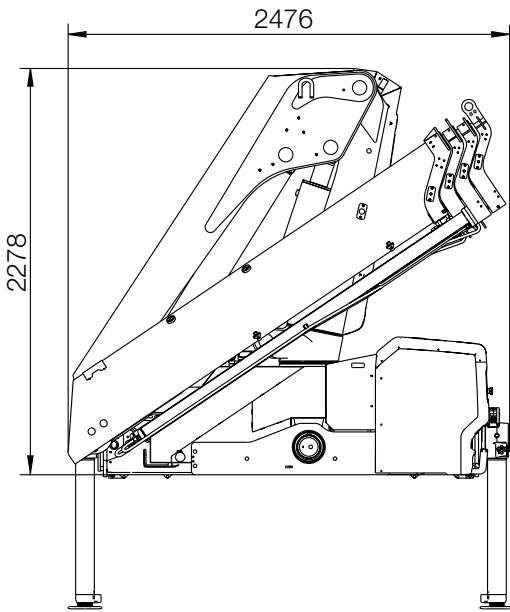
## BASIC DATA

Technical data	218 CLX B-1	218 CLX B-3	218 CLX B-4	218 CLX E-3
Mdyn (kNm)	237	246	249	248
Lifting capacity (ADC) (kNm)	192	180	176	180
Lifting capacity (ADC) (tm)	19.6	18.4	17.9	18.4
Outreach – lifting capacity, standard (m - kg)	3.2 – 6000	3.5 – 5300	3.5 – 5100	3.5 – 5200
	4.6 – 4250	4.7 – 3850	4.7 – 3750	4.7 – 3900
	6.4 – 3050	6.4 – 2750	6.4 – 2650	6.5 – 2750
	–	8.4 – 2060	8.4 – 1940	8.5 – 2060
	–	10.5 – 1640	10.5 – 1500	10.5 – 1660
	–	–	12.6 – 1240	–
Outreach / lifting capacity, manual extension (m-kg)	8.4 – 2240	12.6 – 1280	14.9 – 940	12.7 – 1300
Hydraulic outreach, standard (m)	6.6	10.8	12.9	10.6
Hydraulic boom extension (m)	1.9	5.9	8.0	5.9
Lifting height above installation level, hydr/man (m)	9.0 / 11.1	13.2 / 15.4	15.3 / 17.6	13.1 / 15.3
Rec. fixed oil flow (l/min)	50 – 60			
Working pressure (Mpa)	30.8			
Oil in tank (l)	64 – 200			
Tank capacity (l)	85 – 235			
Slewing angle (°)	415			
Max slope viable at full capacity (°)	5			
Slewing torque, gross (kNm)	28.3			
Slewing speed 80 (°/s)	15			
Slewing speed (°/s)	15			
Lifting speed at standard hydraulic outreach (m/s)	0.9	1.5	1.8	1.4
Height in folded position (mm)	2268			2269
Width in folded position (mm)	2476			2485
Install space required with hose and pipe kit (mm)	846	953		875
Crane in standard version without stabiliser system (kg)	1690	2000	2140	2120
Frame attachments (kg)	41 – 65			
Stabiliser system equipment (kg)	271 – 428			

*This table shows a few examples of models, and represents some of all options available. With the opportunity to configure your crane, we can provide you with a crane perfectly tailored to your needs.*

*Please contact your local dealer for more information on the variety of options we can offer.*

# HIAB 218 CLX\*



**Disclaimer.** We reserve the right to make changes. Illustrations, drawings and data are not always in accordance with the latest version or standard model in production. The models in the pictures may present special equipment or colours.

# BUILT TO PERFORM

Hiab is a leading provider of smart and sustainable load handling solutions. We are committed to delivering the best customer experience every day with the most engaged people and partners. Hiab's premium equipment includes HIAB, EFFER and ARGOS loader cranes, MOFFETT and PRINCETON truck mounted forklifts, LOGLIFT forestry cranes, JONSERED recycling cranes, MULTILIFT skiploaders and hooklifts, GALFAB roll-off cable hoists, and tail lifts under the ZEPRO, DEL and WALTCO brands. As the industry pioneer, Hiab continues to make load handling smarter, safer and more sustainable to build a better tomorrow. Hiab is part of Cargotec Corporation.

[www.hiab.com](http://www.hiab.com)

