



# **HIAB** ex.192 HI PRO

BASIC DATA  
2024.06

# HIAB eX.192 HIPRO

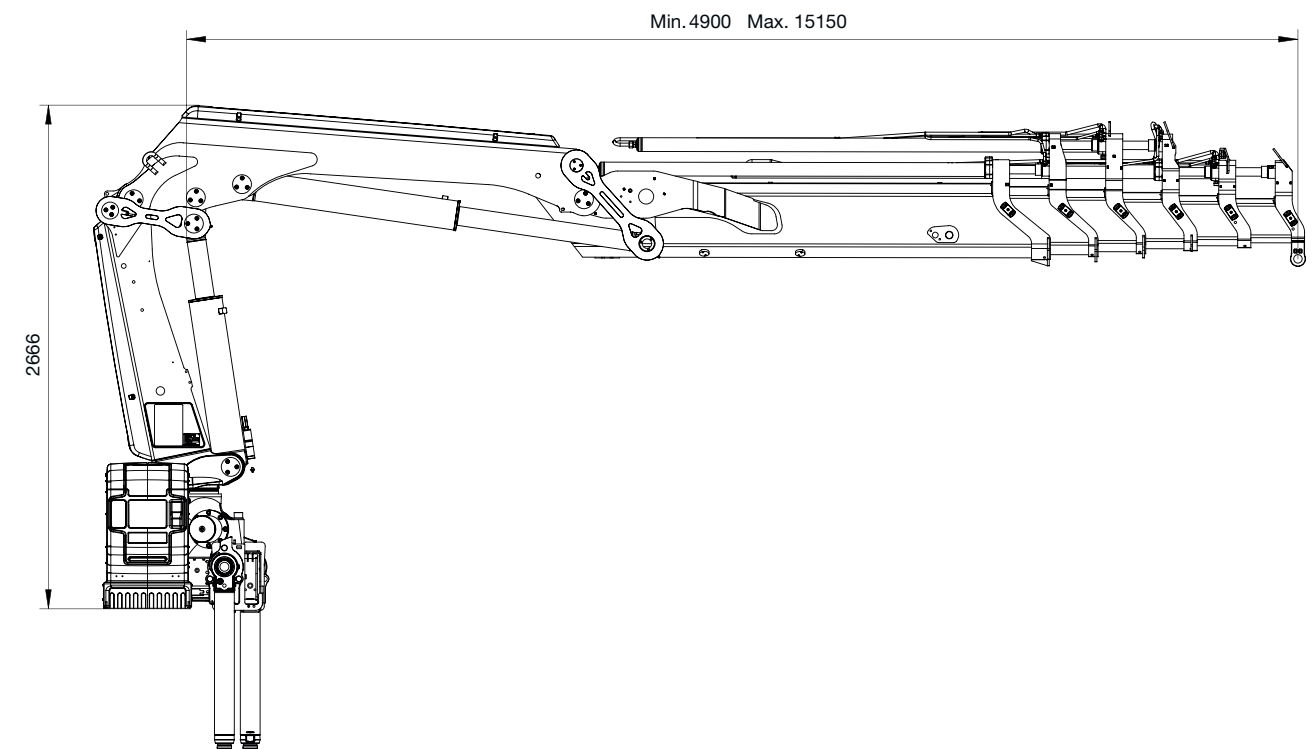
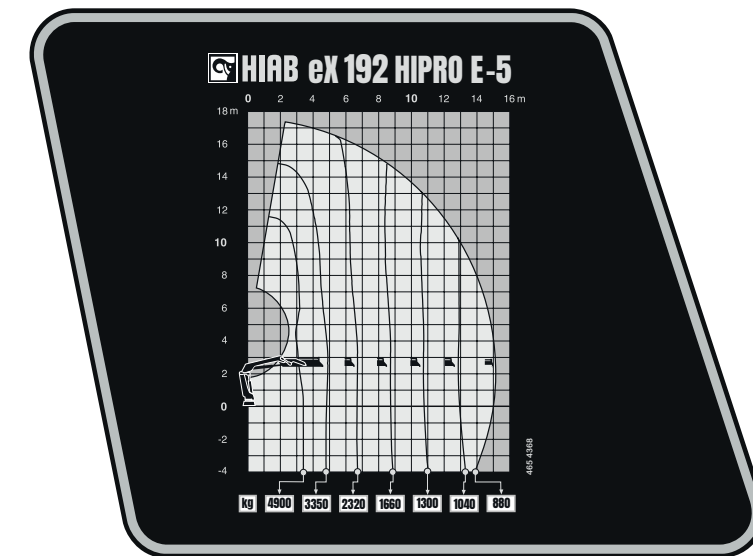
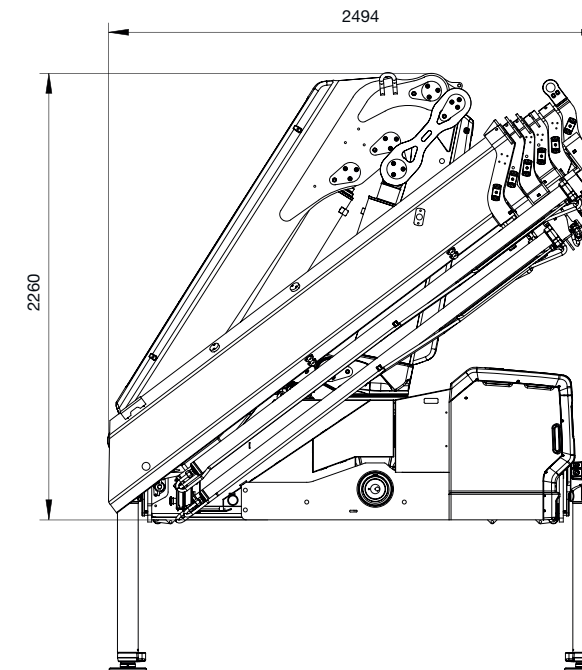
## BASIC DATA

| Technical data   | eX.192 HIPRO E-3 | eX.192 HIPRO E-5 | eX.192 HIPRO E-6 | eX.192 HIPRO ES-2 |
|--|------------------|------------------|------------------|-------------------|
| Mdyn (kNm)   | 214              | 215              | 216              | 213               |
| Lifting capacity (ADC) (kNm)                             | 172              | 163              | 160              | 177               |
| Lifting capacity (ADC) (tm)                              | 17.5             | 16.6             | 16.3             | 18.1              |
| Outreach – lifting capacity, standard (m – kg)           | 3.3 – 5300       | 3.4 – 4900       | 3.4 – 4800       | 3.1 – 5800        |
|  | 4.8 – 3650       | 4.9 – 3350       | 5.0 – 3200       | 4.4 – 4100        |
|  | 6.6 – 2550       | 6.7 – 2320       | 6.8 – 2180       | 6.2 – 2900        |
|  | 8.6 – 1920       | 8.7 – 1660       | 8.8 – 1540       | 8.2 – 2180        |
|  | 10.6 – 1540      | 10.7 – 1300      | 10.8 – 1180      | –                 |
|  | –                | 12.8 – 1 040     | 12.9 – 930       | –                 |
|  | –                | 15.0 – 880       | 15.1 – 760       | –                 |
|  | –                | –                | 17.4 – 650       | –                 |
| Outreach – lifting capacity, manual extensions (m – kg)  | 12.8 – 1220      | 17.4 – 490       | 19.2 – 300       | 10.3 – 1660       |
| Hydraulic outreach, standard (m)                         | 10.8             | 15.2             | 17.5             | 8.3               |
| Hydraulic boom extension (m)                             | 6.0              | 10.3             | 12.6             | 3.9               |
| Outreach, manual extensions (m)                          | 12.9             | 17.5             | 19.3             | 10.5              |
| Lifting height above installation level, hydr/man (m)    | 13.2 / 15.4      | 17.6 / 20.0      | 20.0 / 21.9      | 10.8 / 12.9       |
| Rec. fixed oil flow (l/min)                              | 70               |                  |                  |                   |
| Rec. variable oil flow (l/min)                           | 90 – 120         |                  |                  |                   |
| Working pressure (Mpa)                                   | 34.5             |                  |                  |                   |
| Tank capacity (l)  | 85 / 150         |                  |                  |                   |
| Slewing angle (°)  | 415              |                  |                  |                   |
| Max slope viable at full capacity (°)                    | 5                |                  |                  |                   |
| Slewing torque, gross (kNm)                              | 28.3             |                  |                  |                   |
| Slewing speed (°/s)                                      | 16               |                  |                  |                   |
| Lifting speed at standard hydraulic outreach (m/s)       | 1.8              | 2.6              | 3.0              | 1.4               |
| Height in folded position (mm)                           | 2260             |                  | 2 265            | 2 260             |
| Width in folded position (mm)                            | 2 485            | 2496             |                  | 2485              |
| Install space required with hose and pipe kit (mm)       | 965              | 965              | 965              | 865               |
| Crane in standard version without stabiliser system (kg) | 2095             | 2375             | 2495             | 1935              |
| Frame attachments (kg)                                   | 40 – 65          |                  |                  |                   |
| Stabiliser system equipment (kg)                         | 271 – 428        |                  |                  |                   |

This table shows a few examples of models, and represents some of all options available. With the opportunity to configure your crane, we can provide you with a crane perfectly tailored to your needs.

Please contact your local dealer for more information on the variety of options we can offer.

## HIAB eX.192 HIPRO E-5



**Disclaimer.** We reserve the right to make changes. Illustrations, drawings and data are not always in accordance with the latest version or standard model in production. The models in the pictures may present special equipment or colours.

# BUILT TO PERFORM

Hiab is a leading provider of smart and sustainable load handling solutions. We are committed to delivering the best customer experience every day with the most engaged people and partners. Hiab's premium equipment includes HIAB, EFFER and ARGOS loader cranes, MOFFETT and PRINCETON truck mounted forklifts, LOGLIFT forestry cranes, JONSERED recycling cranes, MULTILIFT skiploaders and hooklifts, GALFAB roll-off cable hoists, and tail lifts under the ZEPRO, DEL and WALTCO brands. As the industry pioneer, Hiab continues to make load handling smarter, safer and more sustainable to build a better tomorrow. Hiab is part of Cargotec Corporation.

[www.hiab.com](http://www.hiab.com)

