



# **HIAB** ix.228 HIDUO

BASIC DATA  
2024.06

# HIAB iX.228 HIDUO

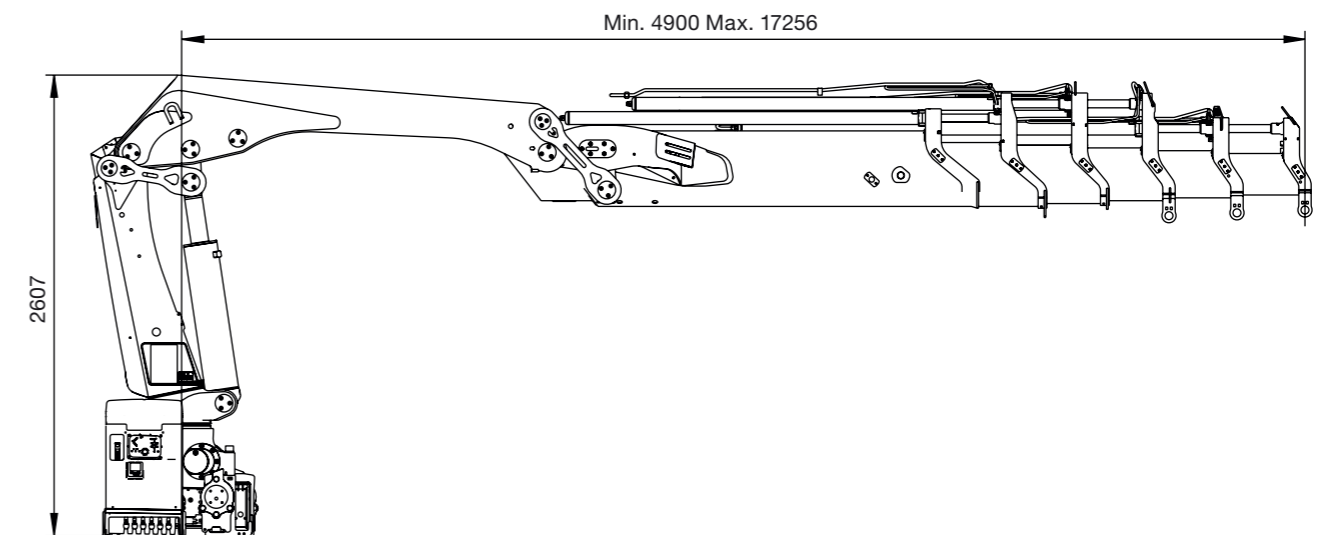
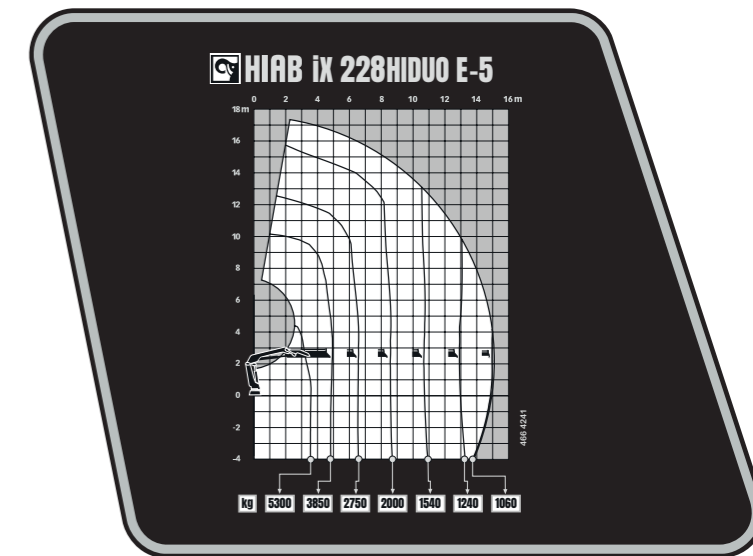
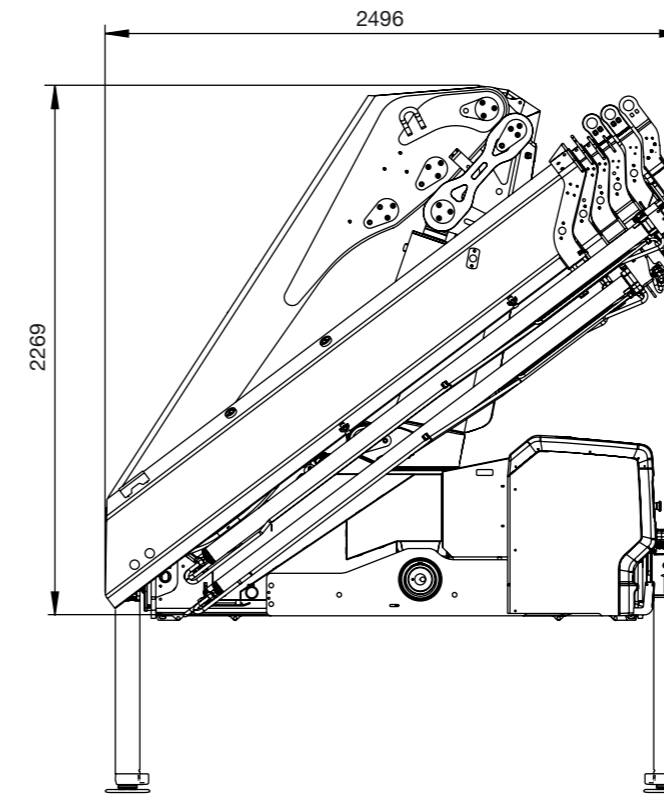
## BASIC DATA

Technical data	iX.228 HIDUO B-3	iX.228 HIDUO B-4	iX.228 HIDUO E-5	iX.228 HIDUO E-6
Mdyn (kNm)	243	244	252	254
Lifting capacity (ADC) (kNm)	195	186	186	182
Lifting capacity (ADC) (tm)	19.9	19.0	19.0	18.6
Outreach – lifting capacity, standard (m – kg)	3.5 – 5700	3.5 – 5500	3.6 – 5300	3.6 – 5200
	4.7 – 4150	4.7 – 4050	4.9 – 3850	4.9 – 3800
	6.4 – 3000	6.4 – 2850	6.6 – 2750	6.7 – 2600
	8.4 – 2240	8.4 – 2100	8.6 – 2000	8.6 – 1880
	10.5 – 1780	10.5 – 1640	10.7 – 1540	10.6 – 1440
	–	12.6 – 1360	12.8 – 1240	12.7 – 1160
	–	–	15.0 – 1060	14.9 – 950
Outreach – lifting capacity, manual extensions (m – kg)	–	–	–	17.2 – 810
Outreach – lifting capacity, manual extensions (m – kg)	12.6 – 1400	14.8 – 1080	17.4 – 540	19.0 – 410
Hydraulic outreach, standard (m)	10.8	12.9	15.1	17.3
Hydraulic boom extension (m)	5.9	8.0	10.2	12.4
Outreach, manual extensions (m)	–			
Lifting height above installation level, hydr/man (m)	13.2 / 15.4	15.3 / 17.6	17.6 / 19.9	19.8 / 21.6
Rec. fixed oil flow (l/min)	65 – 65			
Rec. variable oil flow (l/min)	65 – 65			
Working pressure (Mpa)	32.9			
Oil in tank (l)	85 / 150			
Slewing angle (°)	415			
Max slope viable at full capacity (°)	6		5	
Slewing torque, gross (kNm)	28.3			
Slewing speed (°/s)	15			
Lifting speed at standard hydraulic outreach (m/s)	1.8	2.2	2.5	2.9
Height in folded position (mm)	2278		2269	
Width in folded position (mm)	2476		2496	
Install Space Required with Hose and Pipe Kit (mm)	953	953	985	985
Crane in standard version without stabiliser system (kg)	2000	2140	2380	2510
Frame attachments (kg)	40 – 65			
Stabiliser system equipment (kg)	271 – 428			

This table shows a few examples of models, and represents some of all options available. With the opportunity to configure your crane, we can provide you with a crane perfectly tailored to your needs.

Please contact your local dealer for more information on the variety of options we can offer.

## HIAB iX.228 HIDUO E-5



**Disclaimer.** We reserve the right to make changes. Illustrations, drawings and data are not always in accordance with the latest version or standard model in production. The models in the pictures may present special equipment or colours.

# BUILT TO PERFORM

Hiab is a leading provider of smart and sustainable load handling solutions. We are committed to delivering the best customer experience every day with the most engaged people and partners. Hiab's premium equipment includes HIAB, EFFER and ARGOS loader cranes, MOFFETT and PRINCETON truck mounted forklifts, LOGLIFT forestry cranes, JONSERED recycling cranes, MULTILIFT skiploaders and hooklifts, GALFAB roll-off cable hoists, and tail lifts under the ZEPRO, DEL and WALTCO brands. As the industry pioneer, Hiab continues to make load handling smarter, safer and more sustainable to build a better tomorrow. Hiab is part of Cargotec Corporation.

[www.hiab.com](http://www.hiab.com)

