



EFFER iX.195 HP

BASIC DATA
2022.12

EFFER iX.195 HP

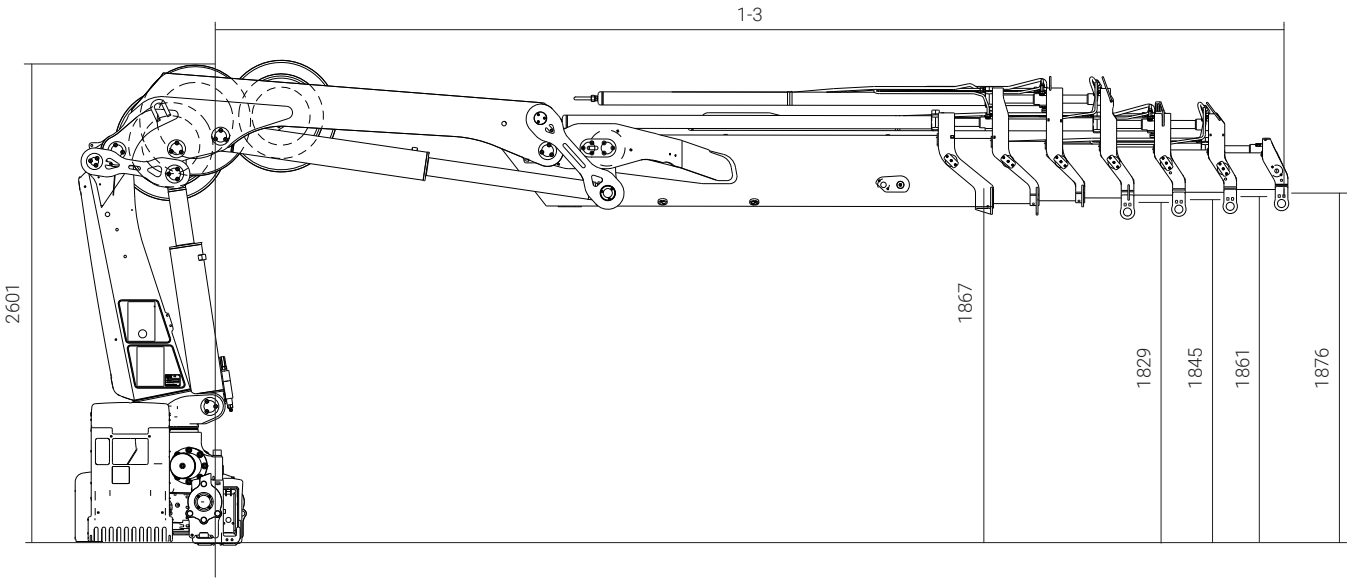
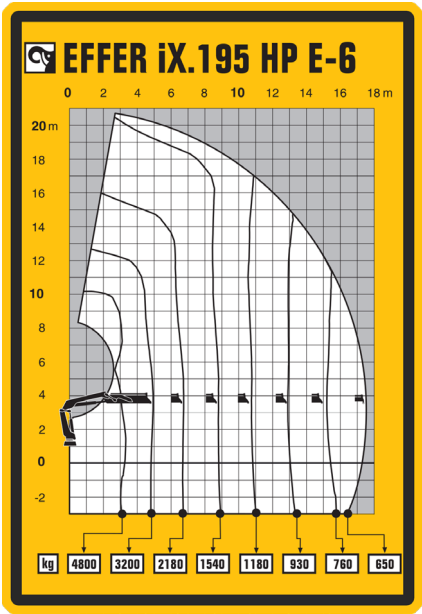
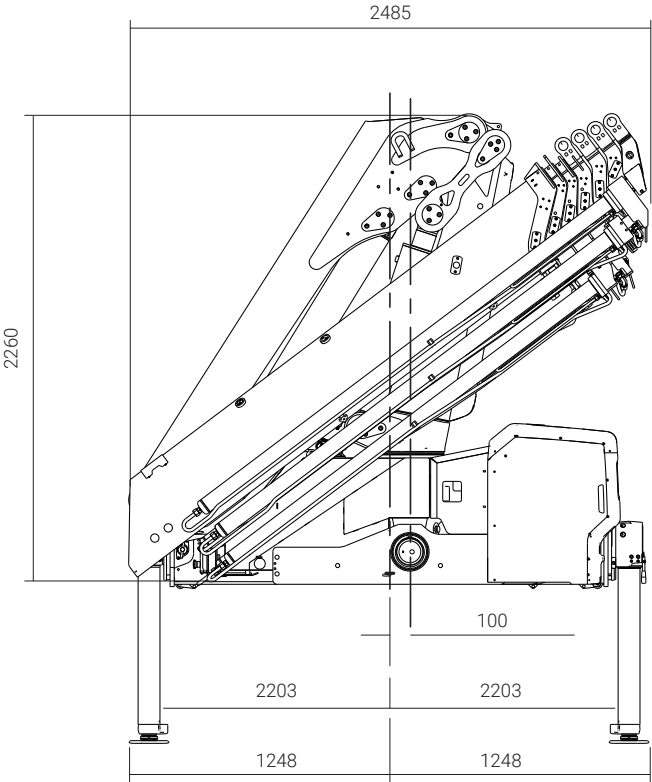
BASIC DATA

Technical data	EFFER iX.195 HP E-3.3	EFFER iX.195 HP E-3.4	EFFER iX.195 HP E-5	EFFER iX.195 HP E-6	EFFER iX.195 HP ES-2
Mdyn (kNm)	214	214	215	216	213
Max. lifting capacity (kNm)	171.7	171.6	163.2	160	177.5
Lifting capacity (tm)	17.5	17.5	16.7	16.3	18.1
Outreach – lifting capacity, standard (m - kg)	3.3 – 5300	3.3 – 5300	3.4 – 4900	3.4 – 4800	3.1 – 5800
	4.8 – 3650	4.8 – 3650	4.9 – 3350	5.0 – 3200	4.4 – 4100
	6.6 – 2550	6.6 – 2550	6.7 – 2320	6.8 – 2180	6.2 – 2900
	8.6 – 1920	8.6 – 1920	8.7 – 1660	8.8 – 1540	6.2 – 2900
	10.6 – 1540	10.6 – 1540	10.7 – 1300	10.8 – 1180	8.2 – 2180
	–	–	12.8 – 1040	12.9 – 930	–
	–	–	15 – 880	15.1 – 760	–
Outreach – lifting capacity, manual extensions (m-kg)	12.8 – 1220	12.8 – 1220	17.4 – 490	19.2 – 300	10.3 – 1660
Rec. fixed oil flow (l/min)	70 – 120				
Working pressure (Mpa)	34.5				
Oil in tank (l)	92 – 200				
Tank capacity (l)	0 – 235				
Slewing angle (°)	415				
Max slope viable at full capacity (°)	5				
Slewing torque, gross (kNm)	28.3				
Height in folded position (mm)	2260	2260	2260	2265	2260
Width in folded position (mm)	2485	2485	2496	2496	2485
Install space required, rotation area not included (mm)	865	865	965	965	865
Install space required with hose and pipe kit (mm)	1046	1046	1042	1002	1045
Crane in standard version without support legs (kg)	2095	2095	2375	2495	1935
Frame attachments (kg)	40 – 65				
Stabiliser system (kg)	271 – 428				

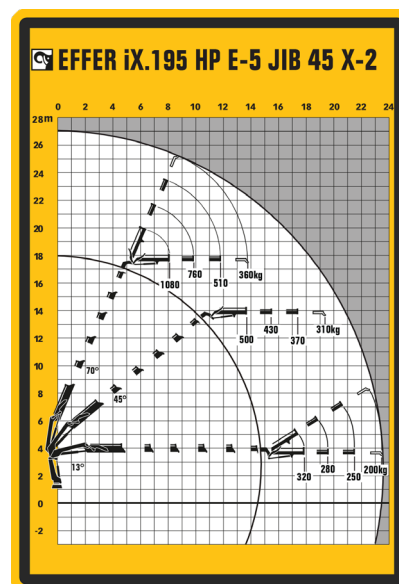
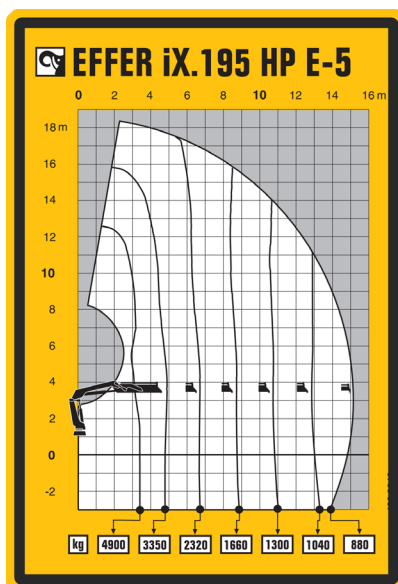
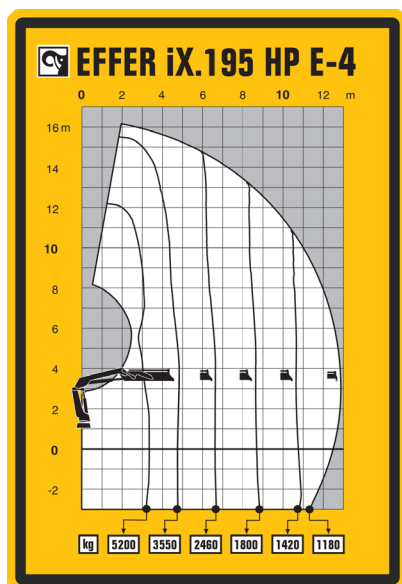
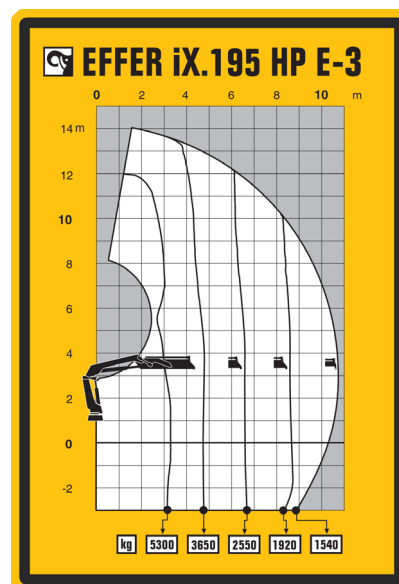
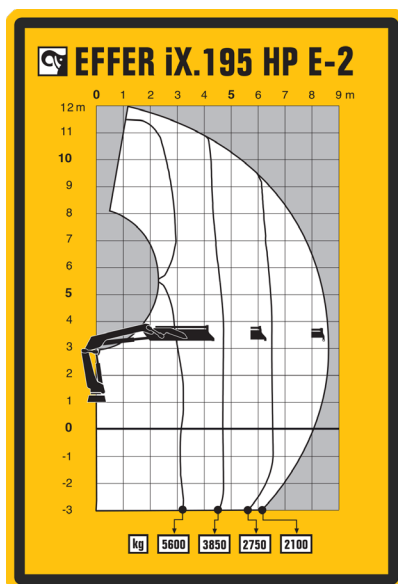
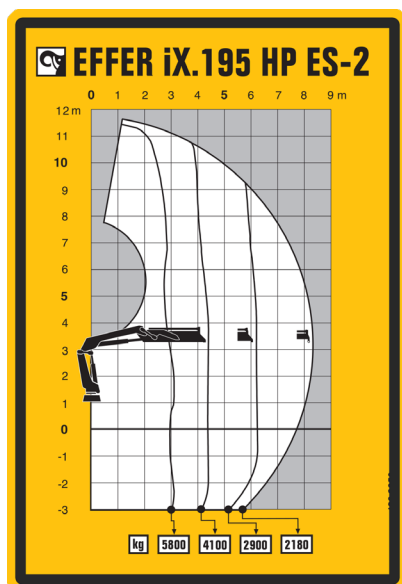
Technical data	EFFER iX.195 HP E-3.3 JIB 45X-2	EFFER iX.195 HP E-3.3 JIB 45X-3	EFFER iX.195 HP E-4 + JIB 45X-2	EFFER iX.195 HP E-4+ JIB 45X-3	EFFER iX.195 HP E-5+ JIB 45X-2
Hyd outreach JIB (m)	17.3	19.2	19.3	21.3	21.6
Outreach – lifting capacity, JIB (m - kg)	13.6 – 810	13.7 – 730	15.7 – 550	15.7 – 480	17.9 – 320
	15.2 – 710	15.3 – 630	17.3 – 480	17.4 – 410	19.6 – 280
	17.1 – 630	17.2 – 550	19.2 – 430	19.2 – 350	21.5 – 250
	–	19.1 – 440	–	21.2 – 320	–
Outreach – lifting capacity, manual extensions (m-kg)	19.1 – 440	–	21.2 – 360	–	23.5 – 200
Crane with JIB, without support legs (kg)	2615	2685	2755	2825	2895
JIB (kg)	420	500	410	490	400
Manual extension (kg)	29	–	29	–	29
Stabiliser system (kg)	271 – 428				

This table shows a few examples of models, and represents some of all options available. With the opportunity to configure your crane, we can provide you with a crane perfectly tailored to your needs. Please contact your local dealer for more information on the variety of options we can offer.

EFFER iX.195 ^{HP} E-6



1-3, OUTREACH				
Ext.	Hyd. ext.		+ Man. ext.	
	Min	Max	Min	Max
E-3	4730	10680	4810	12860
E-4	4810	12860	4900	15150
E-5	4900	15150	4980	17530
E-6	4980	17530	5070	19320



Disclaimer. We reserve the right to make changes. Illustrations, drawings and data are not always in accordance with the latest version or standard model in production. The models in the pictures may present special equipment or colours.

CRANE DESIGNED ACCORDING TO STANDARDS UNI EN 12999 HC1 S2 HD5

The configurations and figures contained in the brochure are illustrative. For information on the complete offer and for more technical details, ask your EFFER dealer or consult the website www.effer.com. The above data are subject to change. Lifting capacity is based on the maximum lifting power of the crane. The stability of the truck may require a reduction of lifting capacity.

Hiab is a leading provider of smart and sustainable load handling solutions. We are committed to delivering the best customer experience every day with the most engaged people and partners. Hiab's premium equipment includes HIAB, EFFER and ARGOS loader cranes, MOFFETT and PRINCETON truck mounted forklifts, LOGLIFT forestry cranes, JONSERED recycling cranes, MULTILIFT skiploaders and hooklifts, GALFAB roll-off cable hoists, and tail lifts under the ZEPRO, DEL and WALTCO brands. As the industry pioneer, Hiab continues to make load handling smarter, safer and more sustainable to build a better tomorrow. Hiab is part of Cargotec Corporation. www.hiab.com

EFFER S.p.A.

Via IV Novembre, 12 | 40061 Minerbio (BO) Italy
Tel. +39 051 4181211 | contact@effer.com
www.effer.com | www.effermarine.com
EFFER is part of HIAB

